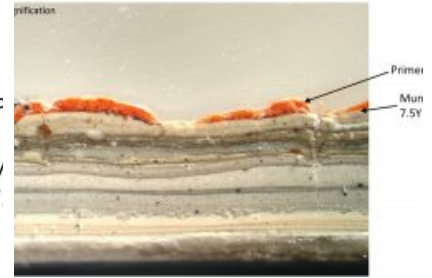
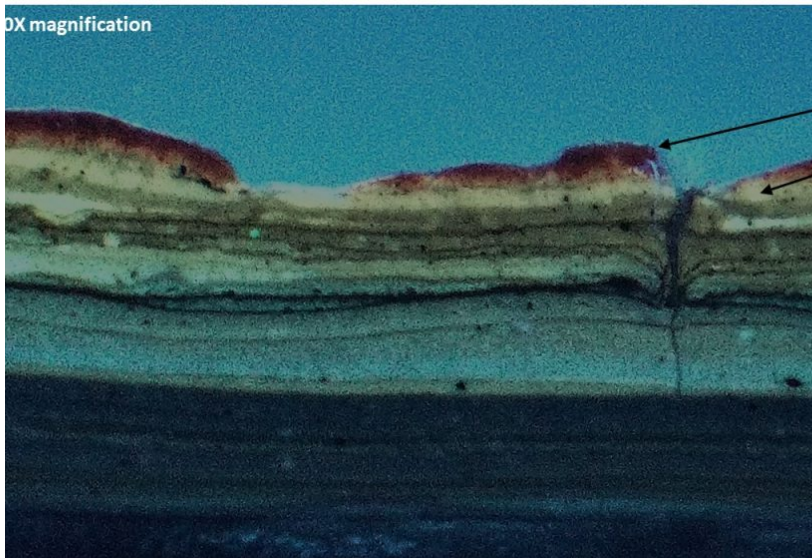


10X magnification



Department of Treasury Bridge Canopy Paint Analysis—Private

WASHINGTON, DC

We, Inc. Was contracted by Citadel DCA to perform paint color analysis for the Department of the Treasury, west-facing bridge canopy. We examined one (1) paint sample that was collected by Citadel DCA from a metal substrate (none retained). The aim of the investigation was to document the earliest existing finish color and provide a color match using the Munsell Color System.

MORE INFORMATION:

<https://evergreene.com/projects/department-of-treasury-bridge-canopy-paint-analysis/>

SERVICES PERFORMED

Decorative Finishes Analysis
Investigation, Testing & Analysis
Paint Studies



253 36th Street, Suite 5-C | Brooklyn, New York, 11232 | (212) 244 2800 | evergreene.com