



# Theaters

- PRESERVATION
- RESTORATION
- DESIGN







 ALTRIA THEATER, RICHMOND

## THEATERS ENRICH OUR COMMUNITIES

At the foundation of urban revitalization initiatives you'll often find theater restoration. Architectural art inspires, particularly in performance spaces—gateways to new perspectives, experiences, and emotions. EverGreene began preserving, conserving, and restoring historic performing arts venues over 40 years ago, and our passion continues to this day.

We understand that the show starts the minute you walk through the door. Our dedication to excellence, commitment to cultural heritage, and emphasis on craftsmanship has enabled hundreds of theaters to bring entertainment and beauty back to their original splendor.

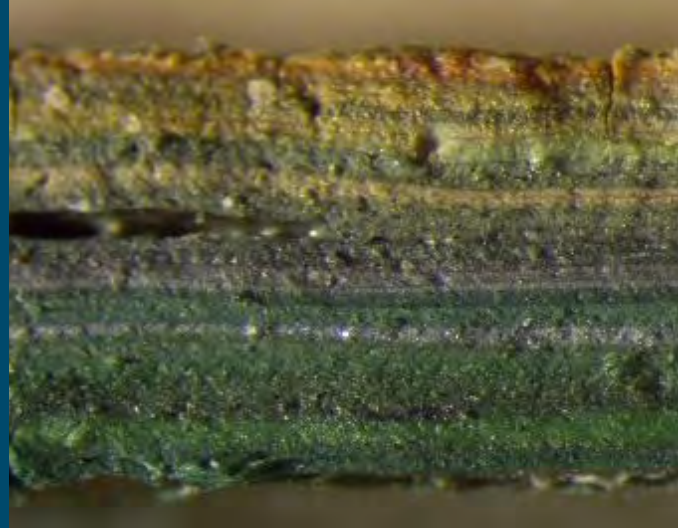
## RESEARCH & INVESTIGATION

Historic restoration and conservation projects begin with research, investigation, testing, and analysis. Identifying the original architectural decorations and understanding the reasons for aging or deterioration help determine the most appropriate treatments and guide budgets.

 SURVEYS & CONDITION ASSESSMENTS

 FINISHES INVESTIGATION

 PAINT STUDIES





## PRECONSTRUCTION PLANNING & DESIGN

Whether a plan exists or if you require help articulating your vision, our cross-disciplinary team collaborates flexibly to advance project scope, address aesthetic and technical concerns, and establish appropriate budgets and timelines.

Design services may include concept development, original design, replicas of historic schemes, plus digital and three-dimensional mock-ups. Oftentimes our solutions allow theaters to remain open and operating while restoration and conservation take place.





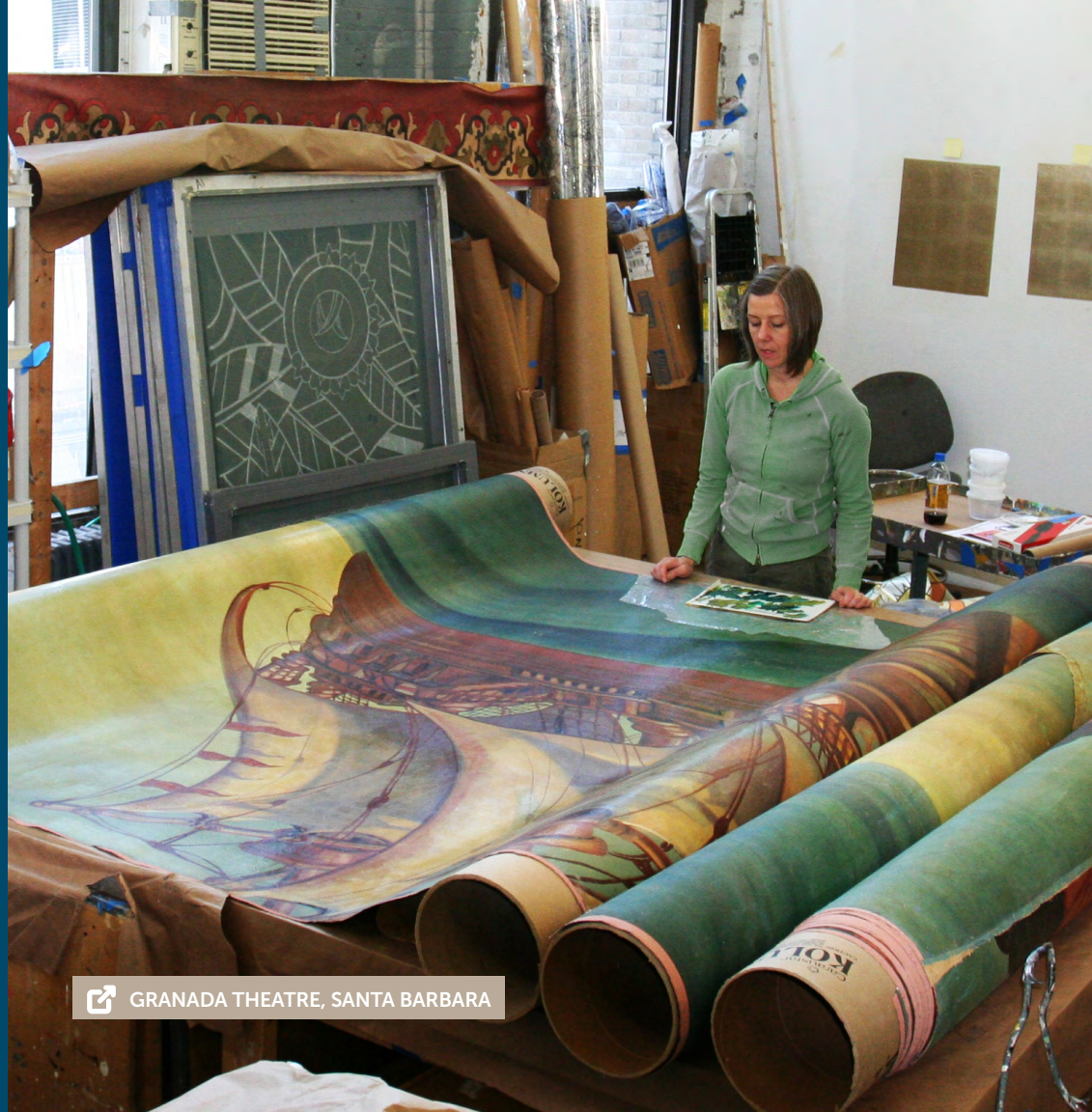
## CONSERVATION

In theaters, conservation and restoration often go hand in hand. Your custom plan may consist of first conserving existing elements, and then moving onto restoring what's missing or damaged. Conservation treatments minimize ongoing aging and deterioration, and are 100% reversible.

Our team will develop a custom solution based on the specific needs of your project. This can include cleaning, stabilization, protective measures, and even long term maintenance programs.

 PLASTER CONSERVATION

 MURALS & MOSAICS



 GRANADA THEATRE, SANTA BARBARA





 KINGS THEATRE, BROOKLYN

## RESTORATION

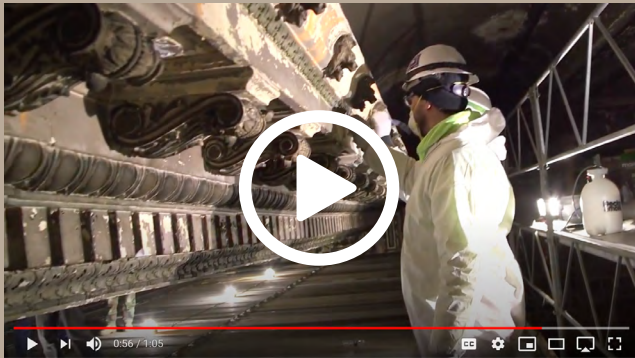
Architectural restoration reverses the effects of aging materials, reinstates lost art, and transforms a masterpiece back to its original glory. In a combined effort utilizing state-of-the-art technology, artistic design, and traditional craftsmanship, we restore historic designs and finishes, stabilize compromised surfaces, replicate or replace missing elements, and often implement new acoustic and safety features.



## FEATURE RESTORATION PROJECT

Historic Academy of Music Theatre  
Academy of the Arts | Lynchburg, VA

When our team began working on this project, there was an extensive amount of repair to the ornamental plaster and decorative painting needed for both the interior and exterior of the theater. Watch our team restore this derelict theater back to its original elegance below:



[VIEW PROJECT](#)







 WARNER THEATRE, TORRINGTON

## DECORATIVE FINISHES

High-quality decorative finishes enhance architecture. We use both traditional and state-of-the-art techniques in order to preserve historic elements, or create timeless contemporary designs.

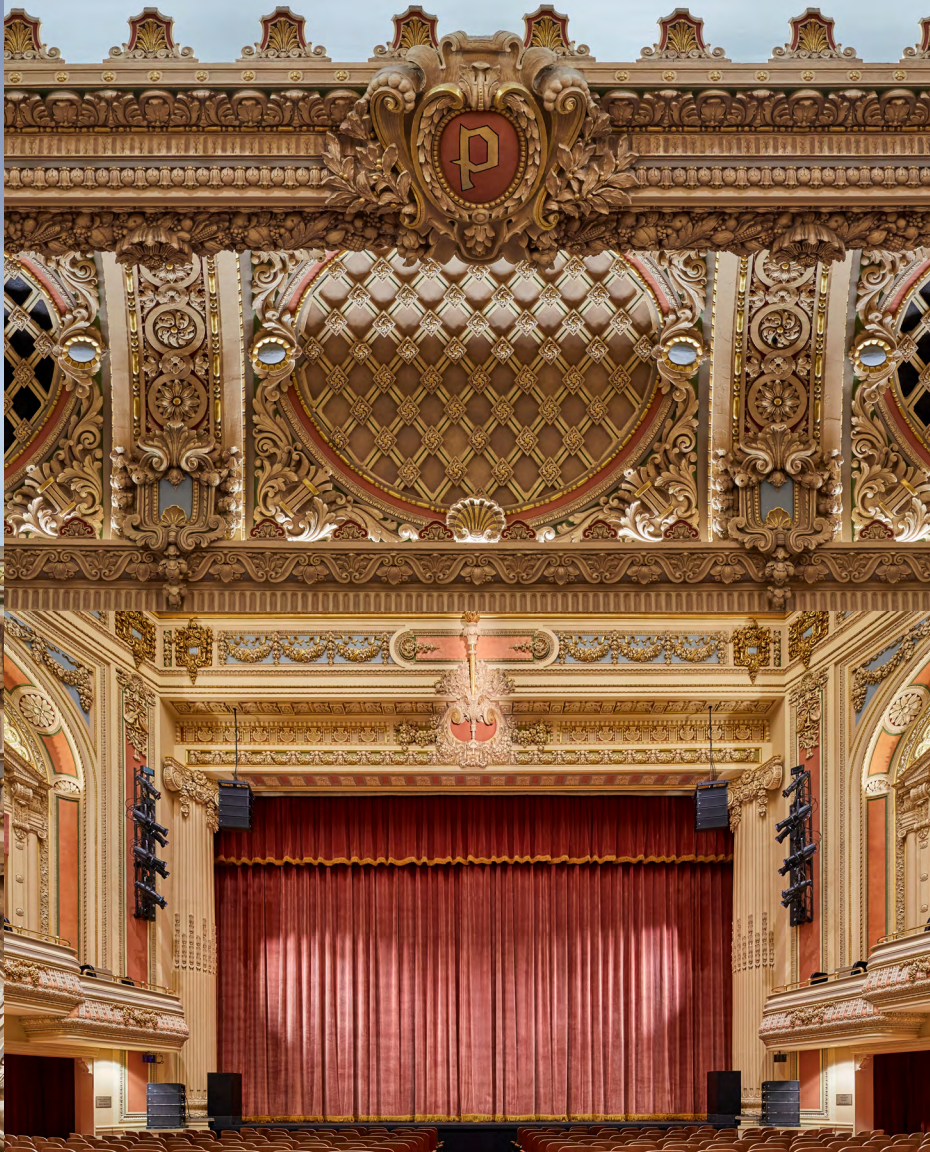
Our expert knowledge of colors, patterns, textures, and materials of specific eras enables us to successfully reawaken historic spaces.

 DECORATIVE FINISHES

 GILDING

 STENCILING





 PANTAGES THEATRE, TACOMA





## ARCHITECTURAL TEXTILES

During our four decades of restoring historic buildings, we have been presented with many unique challenges concerning a variety of textiles, wall coverings, and other soft goods. Our expertise extends to almost any fabric being used to ornament theaters. From restoring or recreating a grand curtain to replicating and replacing historic wallpaper, our team can develop a custom solution for your space.

 ARCHITECTURAL TEXTILES

 PAINTED STAGE & FIRE CURTAINS



## MURALS

Multiple decades of designing, restoring, and preserving murals of any style and era has provided us with an award-winning expertise that is unmatched in the industry. Our dedication to the highest quality and craftsmanship has earned us the trust of hundreds of clients nationwide.





 RICHARD RODGERS THEATRE, NEW YORK CITY



 HELEN HAYES, NEW YORK CITY





## ATMOSPHERIC THEATERS

A popular design trend of the late 1920s, atmospheric theaters mimic elements of nature. Many atmospheric theaters are still operating today, creating an immersive ambiance that transports patrons to the outdoors. Our team has restored many of these architectural elements and ornamentation of these masterpieces, allowing them to enchant future generations.

 [ATMOSPHERIC THEATERS](#)

 THE OLYMPIA THEATRE, MIAMI







## ADAPTIVE REUSE

Transformation of space is a sustainable, community-minded solution that offers an alternative to rebuilding. Abandoned or underutilized buildings can be rejuvenated to offer more to their communities while maintaining their rich history. Preserving significant elements and modifying what needs modernization gives a future to community landmarks with new purposes.

 ADAPTIVE REUSE



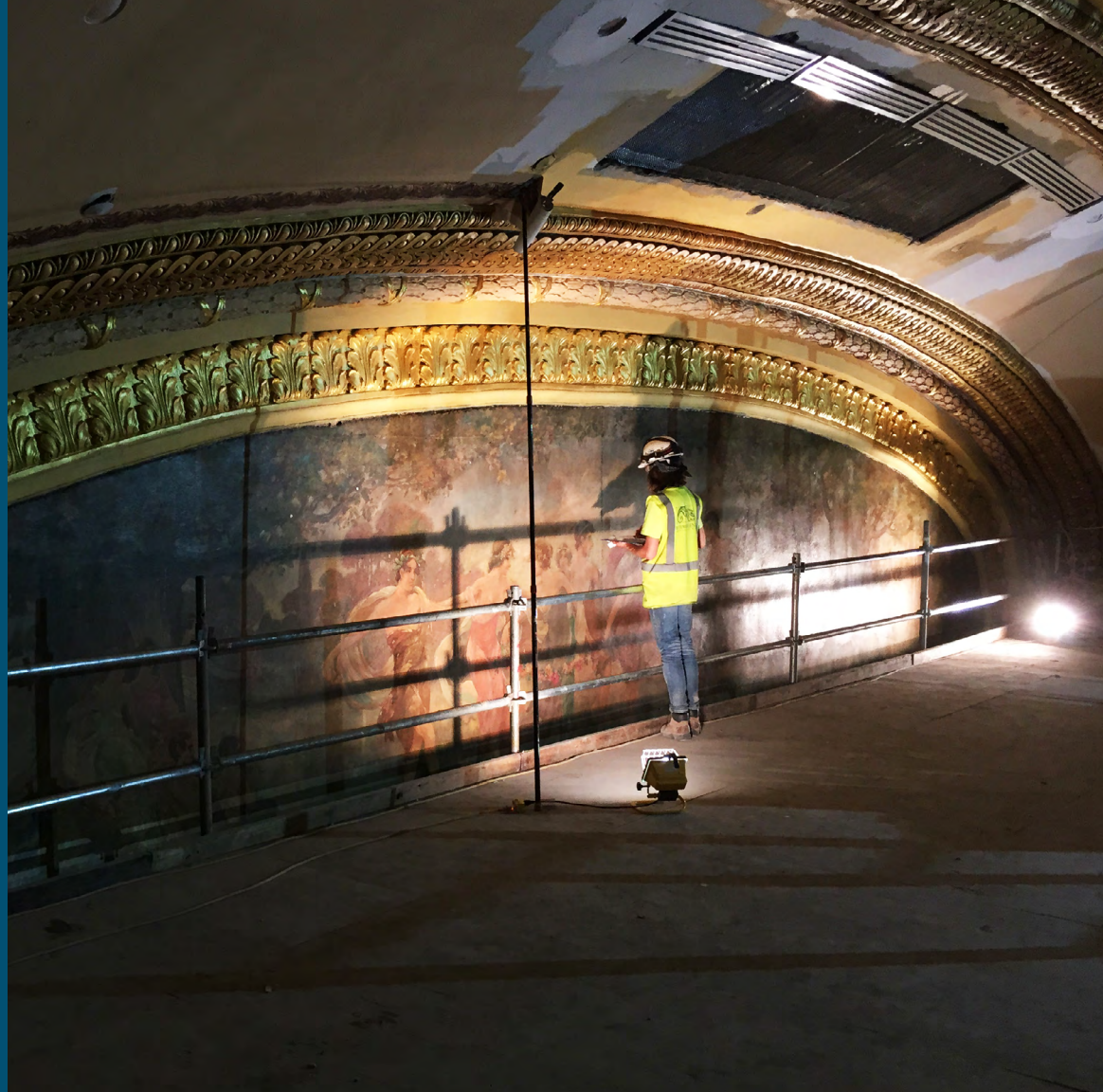
 BROOKLYN TABERNACLE, BROOKLYN



## SAFETY











Jobsite safety is a matter of human dignity, and at EverGreene, it's a top priority.











Our mission is to keep every project incident-free and return each employee home safe and sound. We are proud to be an industry leader in environmental health and safety in historic-built environments.





## FEATURED PROJECTS

-  SAENGER THEATRE, NEW ORLEANS, LA
-  GRANADA THEATRE, SANTA BARBARA, CA
-  ASOLO THEATER, SARASOTA, FL
-  LERNER THEATER, ELKHART, IN
-  PARAMOUNT THEATER, BOSTON, MA
-  SAMUEL J. FRIEDMAN, NEW YORK, NY
-  BALBOA THEATER, SAN DIEGO, CA
-  AKRON CIVIC THEATRE, AKRON, OH
-  BOSTON OPERA HOUSE, BOSTON, MA
-  FOX THEATER, SPOKANE, WA


-  TIMES SQUARE THEATRE, NEW YORK, NY
-  UNITED PALACE, NEW YORK, NY
-  FILLMORE THEATER, DETROIT, MI
-  NEIL SIMON THEATER, NEW YORK, NY
-  KINGS THEATRE, BROOKLYN, NY
-  FOLLY THEATER, KANSAS CITY, MO
-  BROOKLYN TABERNACLE, BROOKLYN, NY
-  LYRIC THEATRE, BIRMINGHAM, AL
-  RADIO CITY MUSIC HALL, NEW YORK, NY
-  KENNEDY CENTER FOR PERFORMING ARTS, DC



## ABOUT US

As stewards of the most treasured buildings, landmarks, monuments, and theaters, we devote every day to the inspiring integration of art and architecture. Employing a cross-disciplinary approach, we integrate the client's vision with conservation science, craftsmanship, advanced technology, art history, and specialty construction. Our artists, craftspeople, and conservators are among the most talented and highly trained in the country.

**Described as “a modern-day renaissance studio” by The New York Times,** EverGreene has provided award-winning design, historic conservation, and restoration services for theaters for over forty years.

 [CONNECT WITH OUR TEAM](#)





TAKE THE MAGIC WITH YOU


 ALAMEDA THEATRE & CINEPLEX, ALAMEDA





We'd love to work with your community. Tell us about your theater.

 REQUEST A CONSULTATION

 (212) 244 2800

NEW YORK CHICAGO LOS ANGELES WASHINGTON D.C.

[evergreene.com](http://evergreene.com)